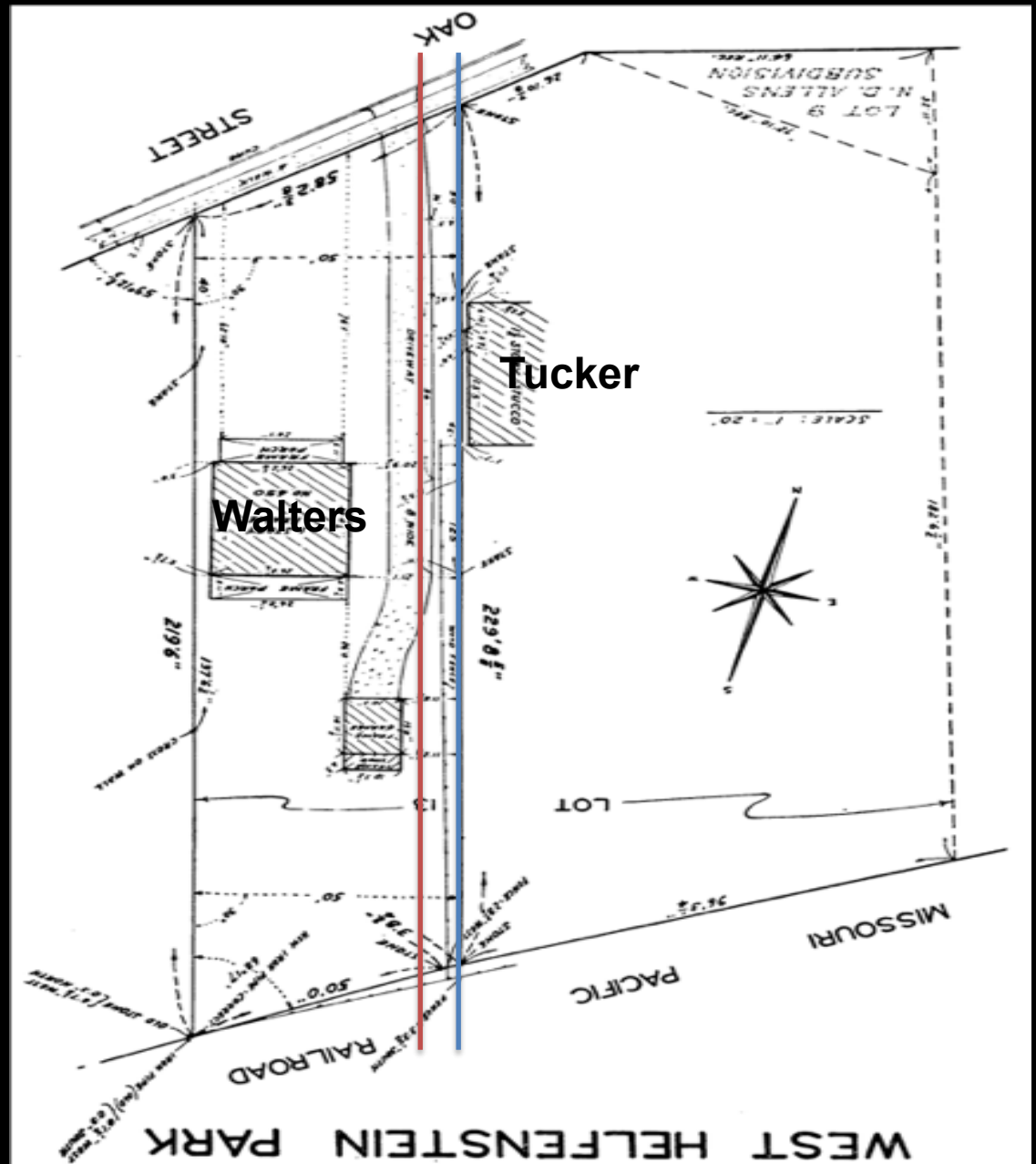


## *Walters v. Tucker*

- “The West 50 feet of Lot 13 of West Helfenstein Park, a Subdivision in United States Survey 1953, Twp. 45, Range 8 East, St. Louis County, Missouri, . . . .”



## *Walters v. Tucker*

- “The West 50 feet of Lot 13 of West Helfenstein Park, a Sub-division in United States Survey 1953, Twp. 45, Range 8 East, St. Louis County, Missouri, . . . .”



## *Walters v. Tucker*

- Time conveyance only 450 Oak St. house
- After conveyance, build Lot 13 house
- Language unambiguous?
- Parol evidence?
- Adverse Possession?

