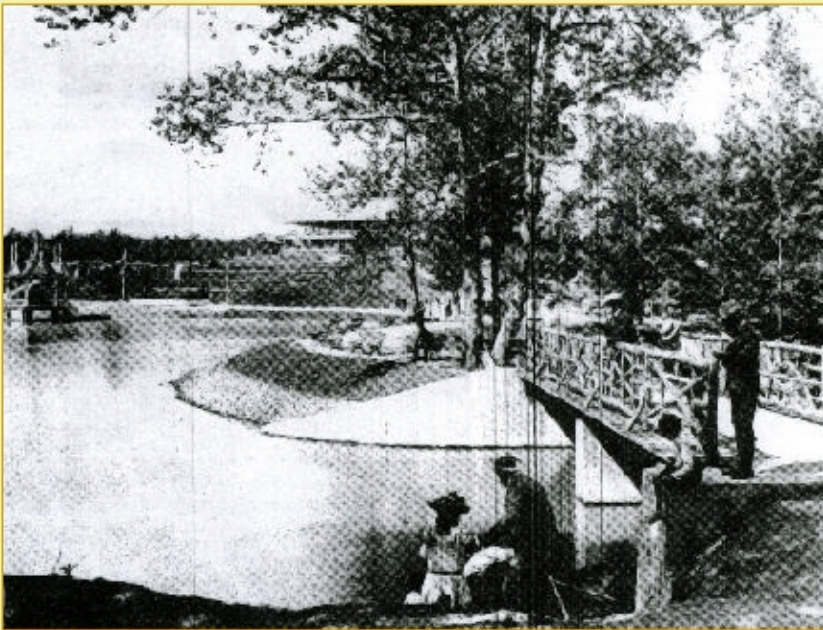


## Historical Images of the University of Richmond



**1** 1946- Richmond street car en route to the city from it's final stop at the University. The brick waiting shelter that still stands today can be seen in the background.



**3** 1905- Richmonders enjoy boating at the Westhampton Park. The bridge in the photograph is located where Tyler Haynes Commons currently stands.

**Campus Features**

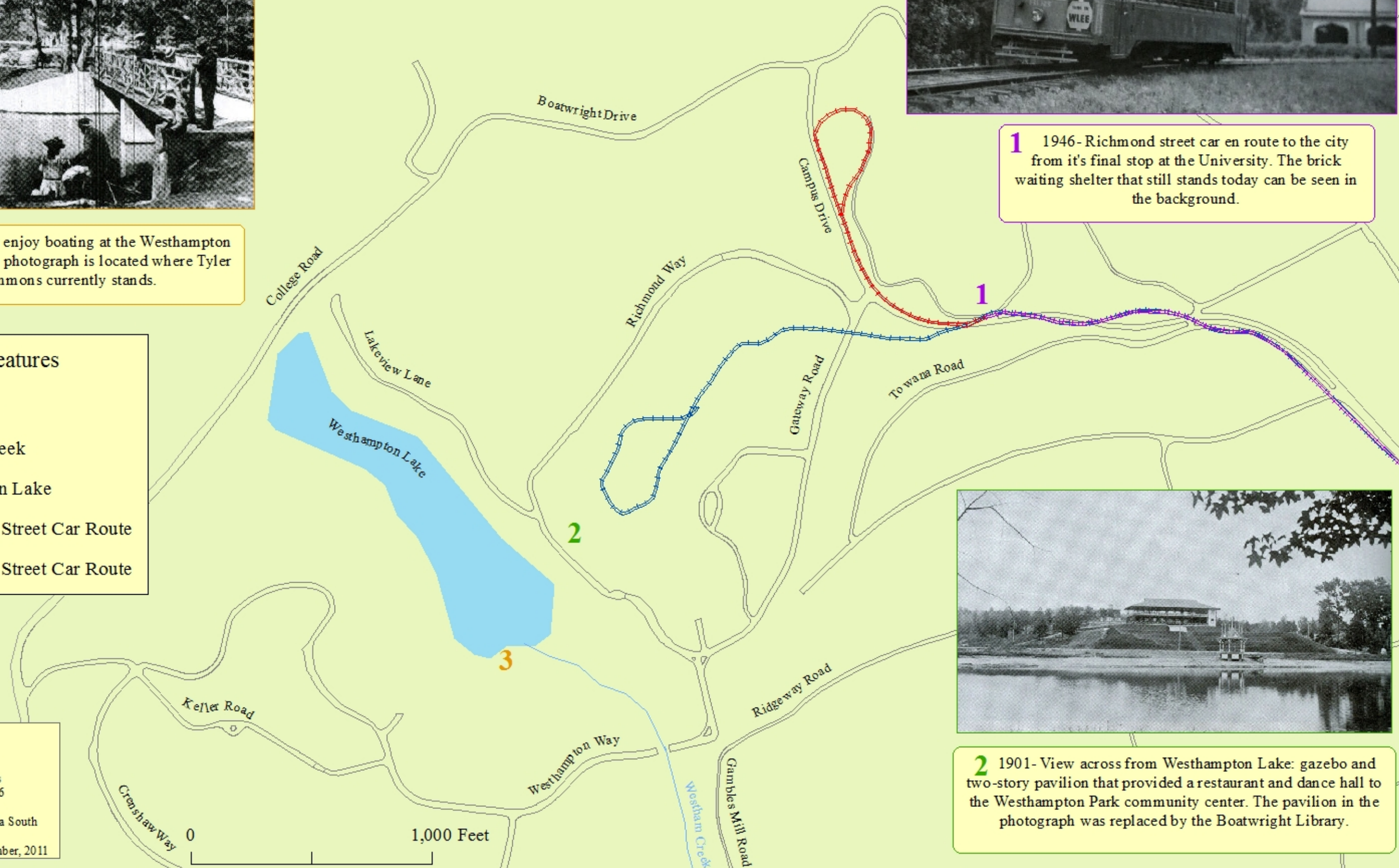
- Roads, 2011
- ~ Westham Creek
- Westhampton Lake
- ~1888-1910 Street Car Route
- ~1910-1947 Street Car Route



**Data Sources:**

Virginia Baptist Historical Society  
 Valentine History Museum Archives  
 Rails in Richmond, McKenney, 1986  
 General Plan of Westhampton, 1901  
 Projection: NAD 1983 HRN Virginia South

Cartographer: Shir Bodner, 6 December, 2011



**2** 1901- View across from Westhampton Lake: gazebo and two-story pavilion that provided a restaurant and dance hall to the Westhampton Park community center. The pavilion in the photograph was replaced by the Boatwright Library.